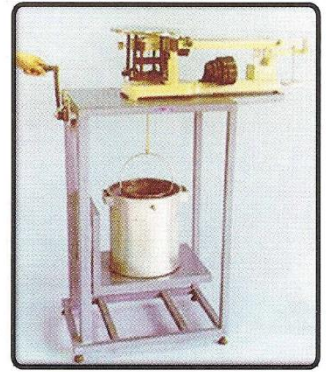


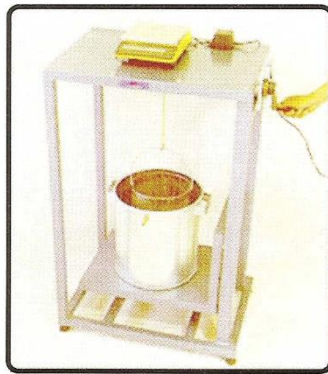
Specific Gravity & Absorption of Coarse (AG-825)

ASTM C-127	AASHTO T-85		
Type	Parts Name	Specification	Qty
AG-826	Dunagan Balance		
Consist of :			
AG-826.1	Mounting Table	Welded steel table, elevated container support	1 Set
AG-826.2	Water Container	Galvanized container, 20 ltr capacity	1 Pc
GE-157	Heavy Duty Solution	20 kg capacity, 1 gr sensitivity supplied complete with weights	1 Set
AG-822	Sample Basket	# 8 mesh, 200 mm dia 200 mm height	1 Pc
Dimension (l x w x h) : 85 x 50 x 130 cm Gross Weight : 60 kg			

Also required, but not part of this set:
AG-105 Sample splitter
GE-174 Drying Oven
GE-303 Square pan
GE-750 Quartering canvas
GE-801 Scoop



AG-825



AG-830

Specific Gravity & Absorption of Coarse (AG-830)

ASTM C-127	AASHTO T-85		
Type	Parts Name	Specification	Qty
AG-831	Dunagan Balance		
Consist of :			
AG-831.1	Mounting Table	Welded steel table, elevated container support	1 Pc
AG-831.2	Water Container	Galvanized container, 20 ltr capacity	1 Pc
GE-161	Balance	Digital balance, 220 V, 6100 gr x 0.1 gr capacity	1 Pc
AG-822	Sample Basket	# 8 mesh, 200 mm dia 200 mm height	1 Pc
Dimension (l x w x h) : 85 x 50 x 120 cm Gross Weight : 50 kg			

Also required, but not part of this set:
AG-105 Sample splitter
GE-174 Drying Oven
GE-303 Square pan
GE-750 Quartering canvas
GE-801 Scoop



AG-910

Organic Impurities Test Tes (AG-910)

ASTM C-40	AASHTO T-21		
Type	Parts Name	Specification	Qty
AG-911	Glass Bottle	350 ml cap., Graduated glass with stopper	1 Pc
AG-912	Stock Solution	Sodium Hydroxide solution (NaOH), 1 ltr	1 Btl
AG-913	Standard Colour Chart	5 standard colour	1 Pc
Dimension (l x w x h) : 25 x 25 x 25 cm Gross Weight : 8 kg			

Also required, but not part of this set:
AG-100 Sample splitter
GE-750 Quartering canvas



AG-920

Soundness Test Set (AG-920)

ASTM C-88	AASHTO T-104		
Type	Parts Name	Specification	Qty
AG-921	Stock Solution	Sodium sulphate solution (Na2SO4), 1 ltr	1 Btl
GE-363	Mixing Bowl	Stainless steel, 24 cm dia.	1 Pc
GE-424	Beaker Glass	1000 ml capacity	1 Pc
GE-600	Thermometer	Glass, 0 - 100° C	1 Pc
Dimension (l x w x h) : 80 x 50 x 40 cm Gross Weight : 8 kg			

Also required, but not part of this set:
AG-214 A Sieve 3/8" ; **AG-234 A** Sieve No. 50
AG-250 Pan & Cover ; **GE-152** Triple beam balance
GE-530 Pipette ; **GE-747** Rubber gloves
GE-174 Drying oven ; **GE-200** Water bath