

AG-610 / AG-601

**Sand Equivalent Shaker ( AG-610 )**

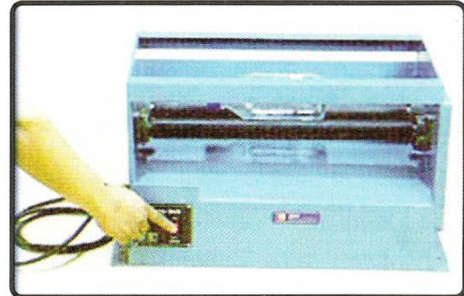
**AG-610**

**ASTM D-2419**

To give greater uniformity action, hand operated mounting bracket with cylinder holder, two spring steel straps, built in counter, wooden case, Supplied without graduated cylinder.

Dimension (l x w x h) : 60 x 30 x 90 cm  
Gross Weight : 20 kg

**AASHTO T-176**



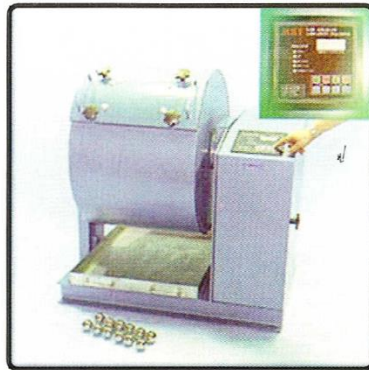
AG-621

**Bottle Roler ( AG-621 )**

**AG-621**

Electric, 220 V, 100 watt, 50 Hz, 1 Phase, 80 RPM. Supplied complete with 1 kg capacity glass jar.

Dimension (l x w x h) : 60 x 30 x 90 cm  
Gross Weight : 20 kg



AG-700

**Los Angeles Abrasion Machine ( AG-700 )**

**ASTM C-131**

For measuring degradation of mineral aggregates from abrasion, impact and grinding

**AASHTO T-96**

Type	Parts Name	Specification	Qty
AG-701	<b>Los Angeles Abrasion Machine Frame</b>	Welded steel frame, 8 and 12 cm [-steel profile 1/2" thick steel plate 28" inner diameter 20" inner width	1 Set
	<b>Drum</b>	Digital, module system for easy maintenance	
	<b>Automatic Counter</b>	Panel button : ON-OFF-RUN-STOP JOG- RESET-500-1000	
	<b>Power</b>	Electromotor, dual voltage 110-220V, 750 Watt, 1 Phase Heavy duty speed reducer 30 - 33 RPM.	
AG-702	<b>Drum Speed Steel Ball</b>	Steel 1 7/8" diameter	12 Pc
AG-703	<b>Cathing Pan</b>	Galvanized steel	1 Pc
Dimension (l x w x h) : 50 x 50 x 100 cm			
Gross Weight : 55 kg			

Also required, but not part of this set:

AG-224 A	Sieve No. 12
GE-157	Heavy duty solution Balance
GE-174	Drying oven
GE-363	Mixing Bowl

**Aggregate Impact Test ( AG-750 )**

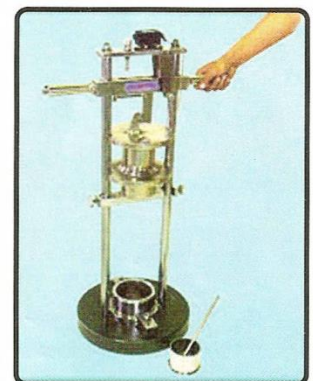
For determining the aggregate impact value and resistance of aggregate to sudden shock of impact.

Type	Parts Name	Specification	Qty
AG-751	<b>Impact Machine</b>	Heavy-duty steel construction, safety locking bar, built in counter	1 Set
AG-752	<b>Cylindrical Measure</b>	Machine steel, 75 mm dia 50 mm deep	1 Pc
AG-753	<b>Tamping Rod</b>	Galvanized steel, 3/8" dia, 8" length	1 Pc

Dimension (l x w x h) : 50 x 30 x 90 cm  
Gross Weight : 80 kg

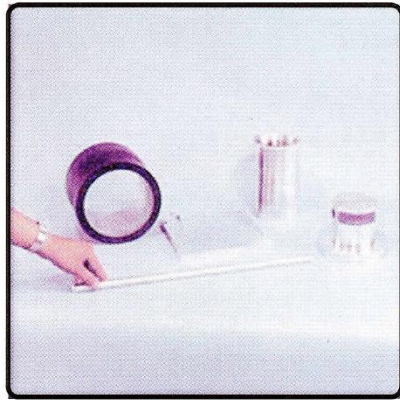
Also required, but not part of this set:

AG-212 A	Sieve 1/2"	; AG-214 A	Sieve 3/8"
AG-222 A	Sieve No. 8	; AG-250	Pan & Cover
GE-152	Triple beam balance	; GE-174	Oven
GE-363	Mixing Bowl	; GE-922	Soft Brush



AG-750





**AG-760 / AG-760 A**

**Aggregate Crushing Value Apparatus ( AG-760 )**

**AG-760  
BS-812**

For determining the crushing properties of bulk aggregate applying 400 kN load over a period of 10 minutes.

Type	Parts Name	Specification	Qty
<b>AG-761</b>	<b>Cylinder</b>	Machine steel, 154 mm dia.,	1 Pc
<b>AG-762</b>	<b>Plunger</b>	Machine steel	1 Pc
<b>AG-763</b>	<b>Base Plate</b>	Machine steel	1 Pc
<b>AG-764</b>	<b>Metal Measure</b>	115 mm dia., 180 mm deep.	1 Pc
<b>AG-765</b>	<b>Tamping Rod</b>	Galvanized steel, 16 mm dia., 500 mm length, hemispherical at both ends.	1 Pc

Dimension (l x w x h) : 30 x 30 x 55 cm  
Gross Weight : 30 kg

**Aggregate Crushing Value Apparatus ( AG-760A )**

**AG-760 A  
BS-812**

For determining the crushing properties of bulk aggregate applying 400 kN load over a period of 10 minutes.

<b>AG-761 A</b>	<b>Cylinder</b>	Machine steel, 78 mm dia.,	1 Pc
<b>AG-762 A</b>	<b>Plunger</b>	Machine steel	1 Pc
<b>AG-763 A</b>	<b>Base Plate</b>	Machine steel	1 Pc
<b>AG-764 A</b>	<b>Metal Measure</b>	57 mm dia., 90 mm deep.	1 Pc
<b>AG-765 A</b>	<b>Tamping Rod</b>	Galvanized steel, 8 mm dia., 300 mm length, hemispherical at both ends.	1 Pc

Dimension (l x w x h) : 20 x 20 x 35 cm  
Gross Weight : 20 kg

**Bulkdensity Test Set ( AG-800 )**

**ASTM C-29**

**AASHTO T-19**

For determining bulk density of fine, coarse or mix aggregate

Type	Parts Name	Specification	Qty
<b>CO-410</b>	<b>Vibrating Table</b>	Variable speed up to 3600 rpm, separate control box, 50 x 50 cm table	1 Set
<b>AG-801</b>	<b>Container</b>	Machined steel, galvanized, 3 ltr capacity	1 Pc
<b>AG-802</b>	<b>Container</b>	Machined steel, galvanized, 10 ltr capacity	1 Pc
<b>AG-802</b>	<b>Container</b>	Machined steel, galvanized, 15 ltr capacity	1 Pc
<b>AG-802</b>	<b>Container</b>	Machined steel, galvanized, 30 ltr capacity	1 Pc

Dimension (l x w x h) : 60 x 60 x 100 cm  
Gross Weight : 150 kg



**AG-800**

Also required, but not part of this set:

<b>GE-159</b>	<b>Platform scale</b>
<b>GE-801</b>	<b>Scoop</b>
<b>GE-891</b>	<b>Straight edge</b>
<b>GE-900</b>	<b>Rubber mallet</b>
<b>GE-930</b>	<b>Tamping Rod</b>

**Absorption of Fine Aggregate Test Set ( AG-810 )**

**ASTM C-128**

**AASHTO T-84**

For determining the water absorption of fine aggregate at saturated surface dry

Type	Parts Name	Specification	Qty
<b>AG-811</b>	<b>Cone and Tamber</b>		
Consist of :			
<b>AG-811.1</b>	<b>Cone</b>	Brass, 40 mm i.d. at the top 90 mm i.d. at the bottom, 75 mm height	1 Pc
<b>AG-811.2</b>	<b>Tamber</b>	Machine steel, 25 cm dia	1 Pc
<b>GE-363</b>	<b>Mixing Bowl</b>	Stainless steel, 25 cm dia	1 Pc
<b>GE-396</b>	<b>Glass Plate</b>	10 mm thick, 30 x 30 cm	1 Pc
<b>GE-412</b>	<b>Volumetric Flask</b>	500 ml capacity	1 Pc
<b>GE-825</b>	<b>Scraper</b>	Plastic Handle	1 Pc
Dimension (l x w x h) : 40 x 40 x 30 cm			
Gross Weight : 7 kg			

Also required, but not part of this set:

<b>AG-100</b>	<b>Sample splitter</b>	<b>AG-232 A</b>	<b>Sieve No. 40</b>
<b>AG-250</b>	<b>Pan &amp; Cover</b>	<b>GE-152</b>	<b>Triple beam balance</b>
<b>GE-174</b>	<b>Drying Oven</b>	<b>GE-521</b>	<b>Wash bottle</b>
<b>GE-530</b>	<b>Pipette</b>	<b>GE-747</b>	<b>Rubber gloves</b>
<b>GE-750</b>	<b>Quartering canvas</b>	<b>GE-800</b>	<b>Scoop</b>
<b>GE-922</b>	<b>Soft brush</b>		



**AG-810 A**